

# Smart Signage Displays STM Series

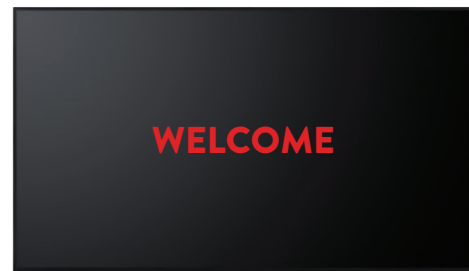
43" / 49"

*Resolution:* 1920x1080 (FHD)  
*Brightness:* 400 cd/m<sup>2</sup>  
*Operation:* 16/7  
*Bezel:* 9-11 mm (T/R/L), 13-15 mm (B)  
*Interface:* HDMI 2.0 / VGA / USB  
/ RS232 / RJ45 / RJ12 for sensors  
/ IR / HP / Audio / Speaker



## HDMI Wake Up

To maximize the user experience while using external video devices such as mediaplayers, display controllers or PCs, all our devices have HDMI Wakeup feature ready to turn on/off the display by simply plugging/unplugging the HDMI cable.



## Boot Up Picture

Display your company logo or other messaging during boot up, or when no signal is received.

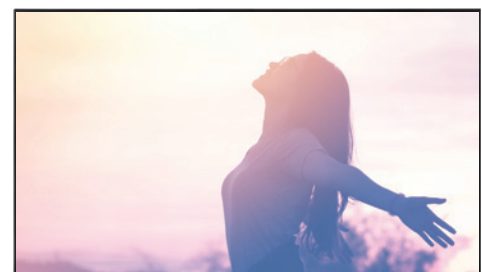


## SoC

HTML-5 based applications can be developed to work directly within the SoC platform of our displays. The displays are capable of working in either online or offline mode.



## Playback schedule



## USB Content Scheduling

USB Content schedules allows you to create playlists of content and schedule them throughout the week. These can then be cloned across multiple displays through USB cloning.

# STM Series

Model Name	STM43UH82/2	STM49UH82/2
<b>Panel</b>		
Screen Size	43"	49"
Panel Technology	IPS	IPS
Backlight Type	Direct-Type LED	Direct-Type LED
Brightness (typical)	400 cd/m <sup>2</sup>	400 cd/m <sup>2</sup>
Native Resolution	1920 x 1080 (16:9) - FHD	1920 x 1080 (16:9) - FHD
Contrast Ratio (typical)	1000:1	1000:1
Dynamic Contrast Ratio	40000:1	40000:1
Panel Life Time ( Min. )	30000 Hrs	30000 Hrs
Response Time (typical)	6 ms	6 ms
Active Area (H x V)	941 x 530 mm	1074 x 605 mm
Pixel Pitch (H x V)	0.4902 x 0.4902 mm	0.5593 x 0.5593 mm
PPI (pixel per inch)	52	45
Viewing Angle	178° Vert., 178° Hor. (89U/89D/89L/89R) @ CR>10	178° Vert., 178° Hor. (89U/89D/89L/89R) @ CR>10
Color Value	16.7 M (8-bit)	16.7 M (8-bit)
Screen Treatment	3H	3H
Haze Level	1%	1%
Refresh Rate	60 Hz	60 Hz
Front Type	Ultra Narrow Bezel	Ultra Narrow Bezel
Orientation	Horizontal	Horizontal
Operation Hours	16/7	16/7
Area of Usage	Indoor	Indoor
<b>Mainboard</b>		
Mainboard Model	17MB135VS	17MB135VS
<b>Monitor Connectivity</b>		
RGB Input	VGA(DE-15F)	VGA(DE-15F)
RGB Output	N/A	N/A
Video Input	2xHDMI2.0, 2xUSB2.0, USB2.0(Internal)	2xHDMI2.0, 2xUSB2.0, USB2.0(Internal)
Video Output	HDMI2.0	HDMI2.0
Audio Input	Line In L/R	Line In L/R
Audio Output	Headphone, Optic SPDIF	Headphone, Optic SPDIF
External Control	RS232(DE-9F), Ethernet(RJ45), Service(RJ12)	RS232(DE-9F), Ethernet(RJ45), Service(RJ12)
External Sensor	RJ12	RJ12
<b>Mechanical</b>		
Product Dimensions (WxDxH)	966 x 106 x 557 mm	1102 x 104 x 635 mm
Package Dimensions (WxDxH)	1050 x 178 x 718 mm	1215 x 165 x 775 mm
Product Weight	10.3 kg	13.7 kg
Package Weight	13.65 kg	17 kg
Vesa Mounting	200 x 200 mm - M6	200 x 200 mm - M6
Bezel Width	B:13   T:9   L/R:10 mm	B:15   T:11   L/R:11 mm
<b>Environmental Conditions</b>		
Operating Temperature	0-40°C	0-40°C
Operating Humidity	10-90%	10-90%
<b>Power</b>		
Power Supply	110 VAC - 240 VAC - 50/60 Hz	110 VAC - 240 VAC - 50/60 Hz
<b>Power Consumption</b>		
Typical	62 W	83 W
Deep Standby	≤0.5 W	≤0.5 W
<b>Features</b>		
Main Features	Open Content Management Support, Scheduler, USB-Autoplay, Auto-Launch, HDMI-CEC, HDMI-Wakeup, Auto-switch on Failover, Panel Lock	Open Content Management Support, Scheduler, USB-Autoplay, Auto-Launch, HDMI-CEC, HDMI-Wakeup, Auto-switch on Failover, Panel Lock
Mechanical Features	Joystick, IR Extender Support, Rocker Switch, Detachable power cable, Carrying slots, Detachable logo positioning, Internal usb cover, Cable Holder	Joystick, IR Extender Support, Rocker Switch, Detachable power cable, Carrying slots, Detachable logo positioning, Internal usb cover, Cable Holder
Optional Features	OPS Compliance, IR Overlay Touch Compliance	OPS Compliance, IR Overlay Touch Compliance
Speaker	2 x 8 W	2 x 8 W
<b>Accessory</b>		
Standard	QSG, Warranty Card, IB, Power Cord, Remote Control, RC Battery, Mounting Kit, Extension Brackets, IR Extender Cable	QSG, Warranty Card, IB, Power Cord, Remote Control, RC Battery, Mounting Kit, Extension Brackets, IR Extender Cable
<b>Certification</b>		
Safety	Yes	Yes
EMC	Yes	Yes
CB	Yes	Yes
CE	Yes	Yes
<b>MSRP Price</b>	<b>NZD 1179.99</b>	<b>NZD 1319.99</b>